

IMPERIAL FEMALE FITTINGS

HFIF01



Alt. HFIF36

THREAD	SEAT	MOUNT	HEX	OAL	FITS
3/8" x 24NF	Inverted	Clip	19mm	38mm	V

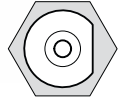
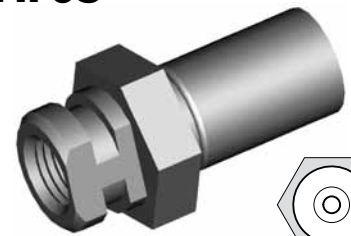
HFIF01B



Brass

THREAD	SEAT	MOUNT	HEX	OAL	FITS
3/8" x 24NF	Inverted	Clip	17mm	38mm	V

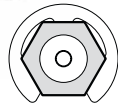
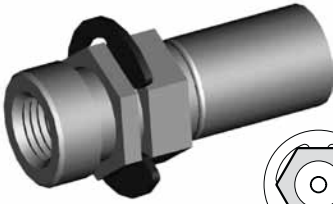
HFIF05



Alt. HFIF45

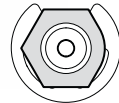
THREAD	SEAT	MOUNT	HEX	OAL	FITS
3/8" x 24NF	Inverted	Clip	19mm	38mm	V

HFIF07



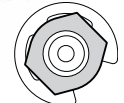
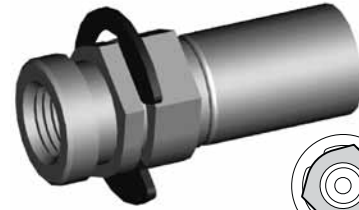
THREAD	SEAT	MOUNT	HEX	OAL	FITS
3/8" x 24NF	Inverted	Clip	16mm	41mm	US

HFIF08



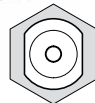
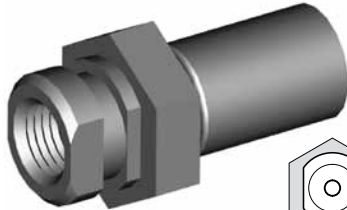
THREAD	SEAT	MOUNT	HEX	OAL	FITS
3/8" x 24NF	Inverted	Clip	16mm	41mm	US

HFIF10



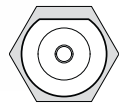
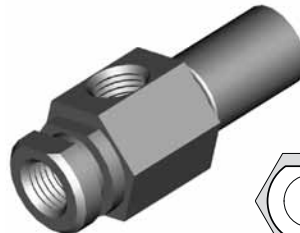
THREAD	SEAT	MOUNT	HEX	OAL	FITS
3/8" x 24NF	Inverted	Clip	16mm	39mm	US

HFIF11



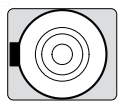
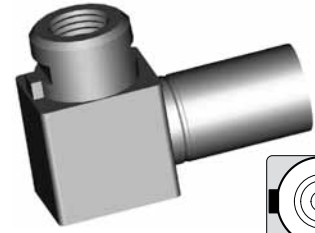
THREAD	SEAT	MOUNT	HEX	OAL	FITS
3/8" x 24NF	Inverted	Clip	19mm	38mm	V

HFIF14



THREAD	SEAT	MOUNT	HEX	OAL	FITS
3/8" x 24NF x 2	Inverted	Clip	19mm	50mm	US

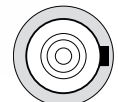
HFIF18



THREAD	SEAT	MOUNT	HEX	OAL	FITS
3/8" x 24NF	Inverted	Clip	-	41mm	US

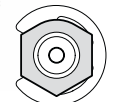
Clip Mount - 3/8" x 24NF

HFIF19



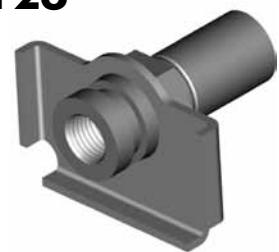
THREAD	SEAT	MOUNT	HEX	OAL	FITS
3/8" x 24NF	Inverted	Clip	16mm	38mm	US

HFIF21



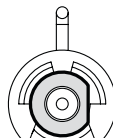
THREAD	SEAT	MOUNT	HEX	OAL	FITS
3/8" x 24NF	DPS	Clip	16mm	37mm	US

HFIF26



THREAD	SEAT	MOUNT	HEX	OAL	FITS
3/8" x 24NF	Inverted	Clip	16mm	40mm	US

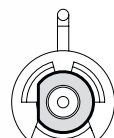
HFIF29



Left

THREAD	SEAT	MOUNT	HEX	OAL	FITS
3/8" x 24NF	Inverted	Clip	-	78mm	US

HFIF30



Right

THREAD	SEAT	MOUNT	HEX	OAL	FITS
3/8" x 24NF	Inverted	Clip	-	78mm	US

HFIF32



THREAD	SEAT	MOUNT	HEX	OAL	FITS
3/8" x 24NF	Inverted	Clip	17mm	41mm	US

A = Asian

EU = European

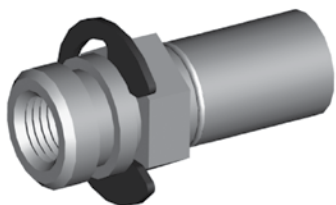
US = United States

UNI = Universal

V = Various

IMPERIAL FEMALE FITTINGS

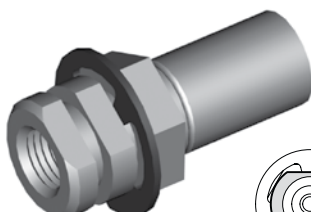
HFIF36



Alt. HFIF01

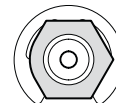
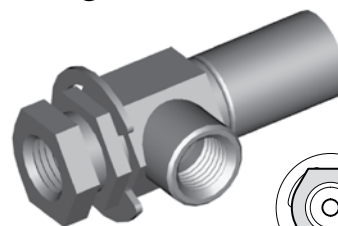
THREAD	SEAT	MOUNT	HEX	OAL	FITS
3/8" x 24NF	Inverted	Clip	16mm	39mm	US

HFIF38



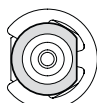
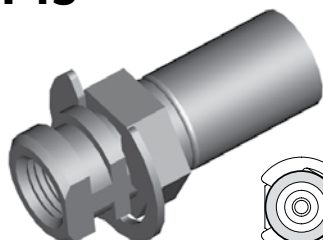
THREAD	SEAT	MOUNT	HEX	OAL	FITS
3/8" x 24NF	Inverted	Clip	17mm	40mm	US

HFIF40



THREAD	SEAT	MOUNT	HEX	OAL	FITS
3/8" x 24NF x 2	Inverted	Clip	16mm	48mm	US

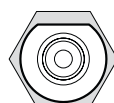
HFIF45



Alt. HFIF05

THREAD	SEAT	MOUNT	HEX	OAL	FITS
3/8" x 24NF	Inverted	Clip	16mm	39mm	US

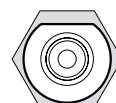
HFIF64



Left

THREAD	SEAT	MOUNT	HEX	OAL	FITS
3/8" x 24NF x 2	Inverted	Clip	19mm	137mm	US

HFIF65

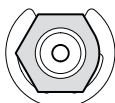
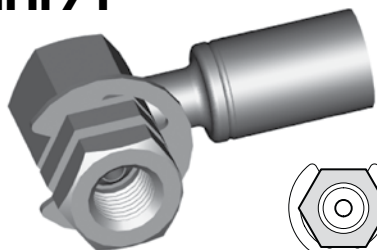


Right

THREAD	SEAT	MOUNT	HEX	OAL	FITS
3/8" x 24NF x 2	Inverted	Clip	19mm	137mm	US

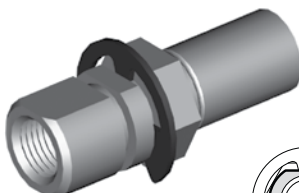
Clip Mount - 3/8" x 24NF

HFIF71



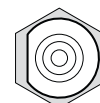
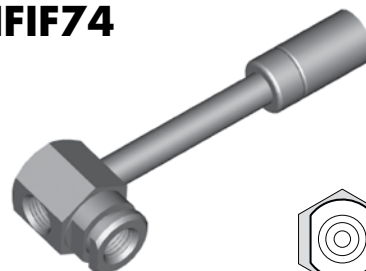
THREAD	SEAT	MOUNT	HEX	OAL	FITS
3/8" x 24NF	Inverted	Clip	16mm	45mm	US

HFIF72



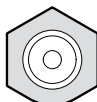
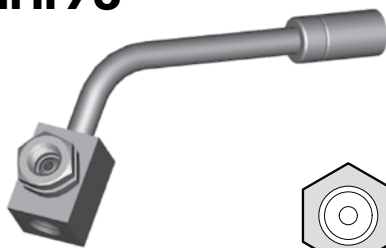
THREAD	SEAT	MOUNT	HEX	OAL	FITS
3/8" x 24NF	Inverted	Clip	17mm	47mm	US

HFIF74



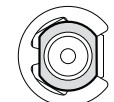
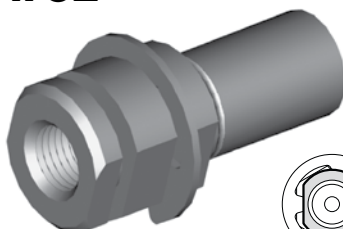
THREAD	SEAT	MOUNT	HEX	OAL	FITS
3/8" x 24NF x 2	Inverted	Clip	19mm	92mm	US

HFIF76



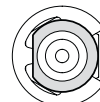
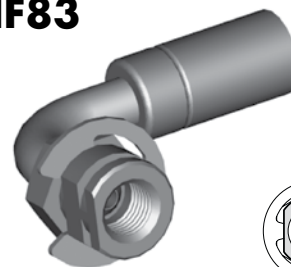
THREAD	SEAT	MOUNT	HEX	OAL	FITS
3/8" x 24NF x 2	Inverted	Clip	16mm	90mm	US

HFIF82



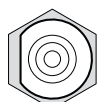
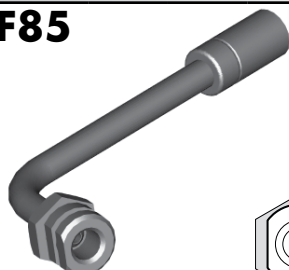
THREAD	SEAT	MOUNT	HEX	OAL	FITS
3/8" x 24NF	Inverted	Clip	16mm	40mm	US

HFIF83



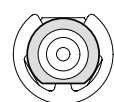
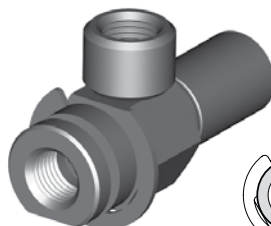
THREAD	SEAT	MOUNT	HEX	OAL	FITS
3/8" x 24NF	Inverted	Clip	16mm	55mm	US

HFIF85



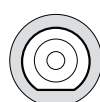
THREAD	SEAT	MOUNT	HEX	OAL	FITS
3/8" x 24NF	Inverted	Clip	17.5mm	-	US

HFIF87



THREAD	SEAT	MOUNT	HEX	OAL	FITS
3/8" x 24NF x 2	Inverted	Clip	17.5mm	50mm	US

HFIF103



THREAD	SEAT	MOUNT	HEX	OAL	FITS
3/8" x 24NF	Inverted	Clip	-	52mm	US

A = Asian

EU = European

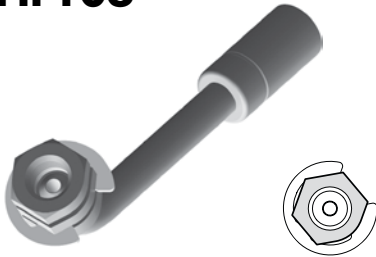
US = United States

UNI = Universal

V = Various

IMPERIAL FEMALE FITTINGS

HFIF106



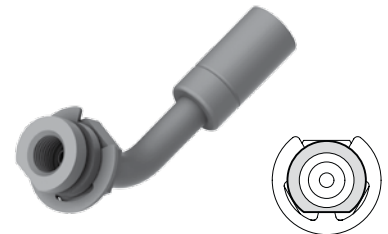
THREAD	SEAT	MOUNT	HEX	OAL	FITS
3/8" x 24NF	Inverted	Clip	16mm	68mm	US

HFIF107



THREAD	SEAT	MOUNT	HEX	OAL	FITS
3/8" x 24NF x 2	Inverted	Clip	19mm	57mm	US

HFIF140



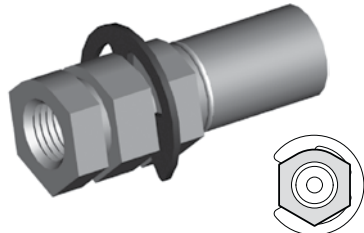
THREAD	SEAT	MOUNT	HEX	OAL	FITS
3/8" x 24NF	Inverted	Clip	17mm	64mm	US

HFIF143



THREAD	SEAT	MOUNT	HEX	OAL	FITS
3/8" x 24NF	Inverted	Clip	16mm	68mm	US

HFIF301



THREAD	SEAT	MOUNT	HEX	OAL	FITS
3/8" x 24NF	Inverted	Clip	16mm	43mm	US

Clip Mount - 3/8" x 24NF

DID YOU KNOW?

Manufacturers design their fittings to suit resources available to them. For instance, some manufacturers make their female fittings with a 3/4" hex to give them a shoulder to mount to, but others prefer to make them from 5/8" hex and then supply a shoulder clip for the shoulder to mount to. BrakeQuip supplies these in both styles. Therefore the following applies.
 HFIF01 = HFIF36, HFIF02 = HFIF24,
 HFIF05 = HFIF45 and vice versa.

A = Asian

EU = European

US = United States

UNI = Universal

V = Various

IMPERIAL FEMALE FITTINGS

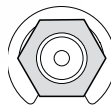
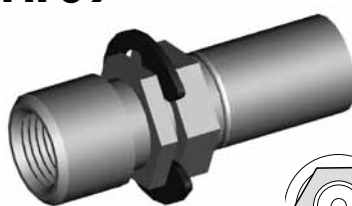
HFIF02



Alt. HFIF24

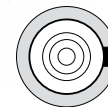
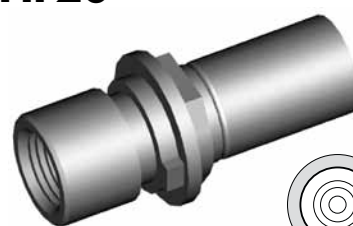
THREAD	SEAT	MOUNT	HEX	OAL	FITS
7/16" x 24NS	Inverted	Clip	19mm	38mm	V

HFIF09



THREAD	SEAT	MOUNT	HEX	OAL	FITS
7/16" x 24NS	Inverted	Clip	16mm	45mm	US

HFIF20



THREAD	SEAT	MOUNT	HEX	OAL	FITS
7/16" x 24NS	Inverted	Clip	16mm	44mm	US

HFIF24



Alt. HFIF02

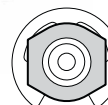
THREAD	SEAT	MOUNT	HEX	OAL	FITS
7/16" x 24NS	Inverted	Clip	16mm	40mm	US

HFIF33



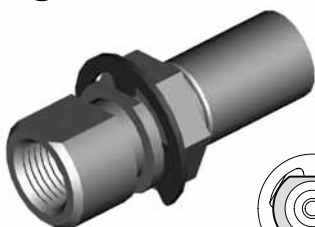
THREAD	SEAT	MOUNT	HEX	OAL	FITS
7/16" x 24NS	Inverted	Clip	17mm	41mm	US

HFIF35



THREAD	SEAT	MOUNT	HEX	OAL	FITS
7/16" x 24NS	Inverted	Clip	16mm	46mm	US

HFIF51



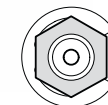
THREAD	SEAT	MOUNT	HEX	OAL	FITS
7/16" x 24NS	Inverted	Clip	17mm	46mm	US

HFIF73



THREAD	SEAT	MOUNT	HEX	OAL	FITS
7/16" x 24NS	Inverted	Clip	17mm	47mm	US

HFIF116



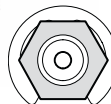
THREAD	SEAT	MOUNT	HEX	OAL	FITS
7/16" x 24NS	Inverted	Clip	5/8"	-	US

HFIF63



THREAD	SEAT	MOUNT	HEX	OAL	FITS
1/2" x 20NF	Inverted	Clip	-	47mm	US

HFIF79



THREAD	SEAT	MOUNT	HEX	OAL	FITS
1/2" x 20NF	Inverted	Clip	16mm	45mm	US

Clip Mount - 7/16" x 24NS

Clip Mount 1/2"

A = Asian

EU = European

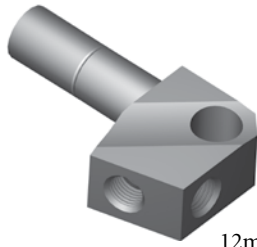
US = United States

UNI = Universal

V = Various

IMPERIAL FEMALE FITTINGS

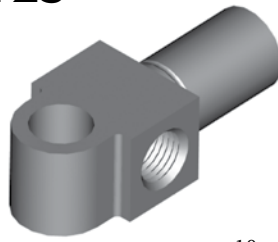
HFIF23



12mm Hole

THREAD	SEAT	MOUNT	HOLE	OAL	FITS
3/8" x 24NF x 2	Inverted	Bolted	12mm	65mm	US

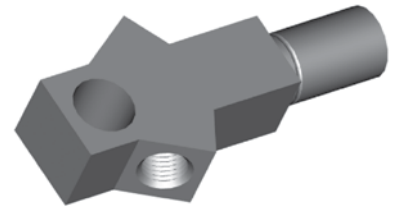
HFIF25



10mm Hole

THREAD	SEAT	MOUNT	HOLE	OAL	FITS
3/8" x 24NF x 2	Inverted	Bolted	10mm	49mm	US

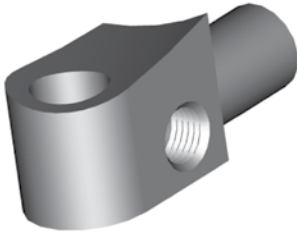
HFIF27



11.8mm Hole

THREAD	SEAT	MOUNT	HOLE	OAL	FITS
3/8" x 24NF x 2	Inverted	Bolted	11.8mm	70mm	US

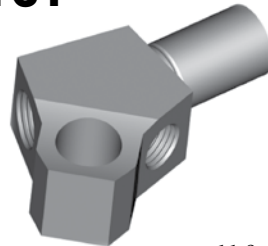
HFIF28



11.8mm Hole

THREAD	SEAT	MOUNT	HOLE	OAL	FITS
3/8"NF-7/16"NS	Inverted	Bolted	11.8mm	52mm	US

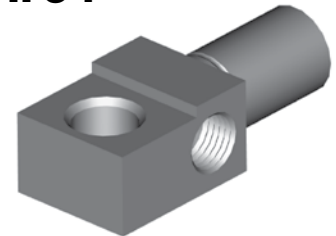
HFIF31



11.9mm Hole

THREAD	SEAT	MOUNT	HOLE	OAL	FITS
3/8"NF-7/16"NS	Inverted	Bolted	11.9mm	52mm	US

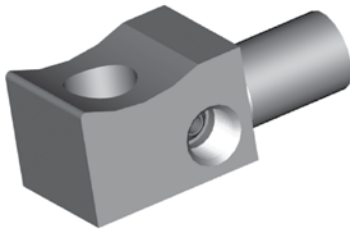
HFIF34



8/10mm Hole

THREAD	SEAT	MOUNT	HOLE	OAL	FITS
3/8" x 24NF x 2	Inverted	Bolted	8/10mm	49mm	US

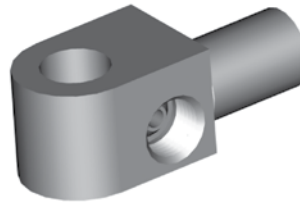
HFIF37



12mm Hole

THREAD	SEAT	MOUNT	HOLE	OAL	FITS
3/8" x 24NF x 2	Inverted	Bolted	12mm	53mm	US

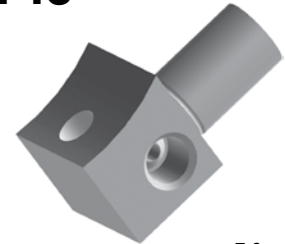
HFIF39



11.8mm Hole

THREAD	SEAT	MOUNT	HOLE	OAL	FITS
3/8"NF-7/16"NS	Inverted	Bolted	11.8mm	52mm	US

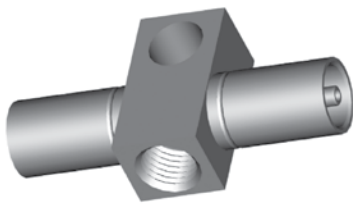
HFIF43



7.3mm Hole

THREAD	SEAT	MOUNT	HOLE	OAL	FITS
3/8"NFx2	Inverted	Bolted	-	22mm	US

HFIF46



10mm Hole

THREAD	SEAT	MOUNT	HOLE	OAL	FITS
7/16" x 24NS	Inverted	Bolted	10mm	60mm	US

HFIF47



12mm Hole

THREAD	SEAT	MOUNT	HOLE	OAL	FITS
3/8" x 24NF x 2	Inverted	Bolted	12mm	50mm	US

HFIF48



11.5mm Hole

THREAD	SEAT	MOUNT	HOLE	OAL	FITS
3/8"NF-7/16"NS	Inverted	Bolted	11.5mm	53mm	US

HFIF53

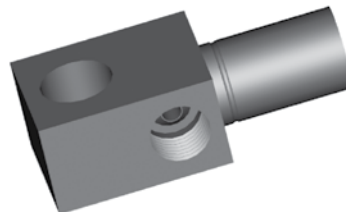


TO BE DISCONTINUED

11.8mm Hole

THREAD	SEAT	MOUNT	HOLE	OAL	FITS
3/8" x 24NF x 2	Inverted	Bolted	11.8mm	53mm	US

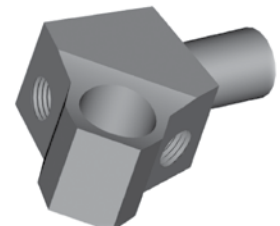
HFIF54



12mm Hole

THREAD	SEAT	MOUNT	HOLE	OAL	FITS
7/16" x 24NS	Inverted	Bolted	12mm	51mm	US

HFIF55



15mm Hole

THREAD	SEAT	MOUNT	HOLE	OAL	FITS
3/8" x 24NF x 2	Inverted	Bolted	15mm	58mm	US

Bolt On Mount

A = Asian

EU = European

US = United States

UNI = Universal

V = Various

IMPERIAL FEMALE FITTINGS

Bolt On Mount

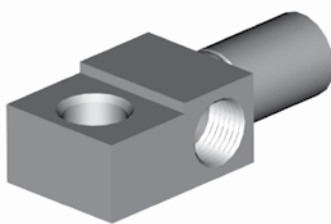
HFIF56



11.8mm Hole

THREAD	SEAT	MOUNT	HOLE	OAL	FITS
3/8" x 24NF x 2	Inverted	Bolted	11.8mm	55mm	US

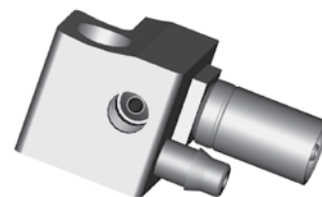
HFIF57



8/10mm Hole

THREAD	SEAT	MOUNT	HOLE	OAL	FITS
7/16" x 24NF x 2	Inverted	Bolted	8/10mm	54mm	US

HFIF58



11.5mm Hole

THREAD	SEAT	MOUNT	HOLE	OAL	FITS
3/8" x 24NF x 2	Inverted	Bolted	11.5mm	50mm	US

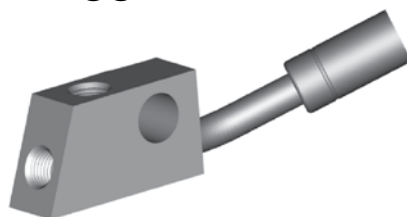
HFIF59



12mm Hole

THREAD	SEAT	MOUNT	HOLE	OAL	FITS
3/8" x 24NF x 2	Inverted	Bolted	12mm	100mm	US

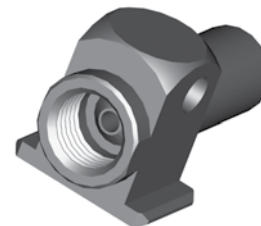
HFIF66



11.9mm Hole

THREAD	SEAT	MOUNT	HOLE	OAL	FITS
3/8" x 24NF x 2	Inverted	Bolted	11.9mm	93mm	US

HFIF77



6.2mm Hole

THREAD	SEAT	MOUNT	HOLE	OAL	FITS
1/2" x 20NF	Inverted	Bolted	6.2mm	42mm	US

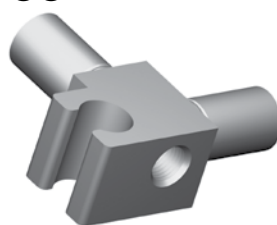
HFIF80



11.8mm Hole

THREAD	SEAT	MOUNT	HOLE	OAL	FITS
3/8" x 24NF x 2	Inverted	Bolted	11.8mm	52mm	US

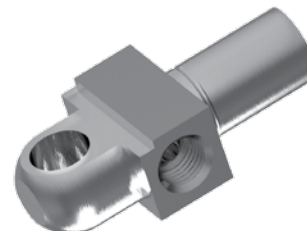
HFIF88



11.6mm Hole

THREAD	SEAT	MOUNT	HOLE	OAL	FITS
3/8" x 24NF	Inverted	Bolted	11.6mm	51mm	US

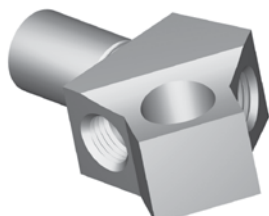
HFIF94



8/10mm Hole

THREAD	SEAT	MOUNT	HOLE	OAL	FITS
3/8" x 2	Inverted	Bolted	10/8mm	58mm	US

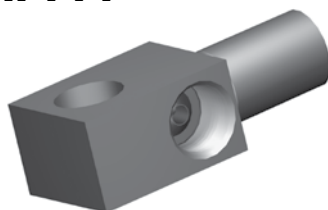
HFIF110



12.0mm Hole

THREAD	SEAT	MOUNT	HOLE	OAL	FITS
3/8" x 24NF x 2	Inverted	Bolted	12mm	-	US

HFIF111



11.9mm Hole

THREAD	SEAT	MOUNT	HOLE	OAL	FITS
7/16" x 24NS - 2	Inverted	Bolt On	11.9mm	51mm	US

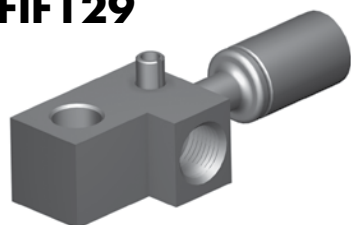
HFIF115



11.9mm Hole

THREAD	SEAT	MOUNT	HOLE	OAL	FITS
7/16" x 24NS x 2	Inverted	Bolted	11.9mm	57mm	US

HFIF129



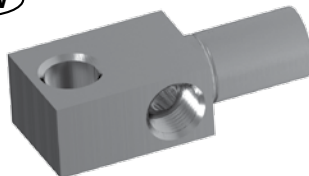
Suits Nissan Sports
Use in conjunction with HF17 or HF33

8.75mm Hole

THREAD	SEAT	MOUNT	HOLE	OAL	FITS
3/8" x 24NF	Inverted	Bolted	8.75mm	75mm	A

HFIF157

NEW



10mm Hole

THREAD	SEAT	MOUNT	HEX	OAL	FITS
7/16" x 24NF x 2	Inverted	Bolted	-	53mm	US

HFIF303



11.4mm Hole

THREAD	SEAT	MOUNT	HOLE	OAL	FITS
3/8"NF-7/16"NS	Inverted	Bolted	11.4mm	70mm	US

A = Asian

EU = European

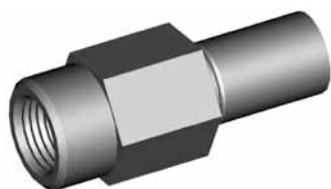
US = United States

UNI = Universal

V = Various

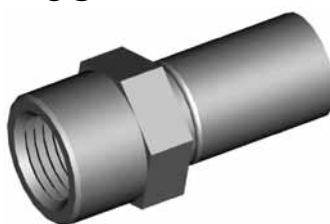
IMPERIAL FEMALE FITTINGS

HFIF03



THREAD	SEAT	MOUNT	HEX	OAL	FITS
1/2" x 20NF	DPS	-	19mm	50mm	US

HFIF06



THREAD	SEAT	MOUNT	HEX	OAL	FITS
1/2" x 20NF	Inverted	-	17mm	38mm	UNI

HFIFX01



Alt. HFIFX23

5/8" x 18NF External Thread

THREAD	SEAT	MOUNT	HEX	OAL	FITS
7/16" x 24NS	Inverted	Bulkhead	19mm	45mm	V

HFIFX02



5/8" x 18NF External Thread

THREAD	SEAT	MOUNT	HEX	OAL	FITS
3/8" x 24NF	Inverted	Bulkhead	19mm	45mm	V

HFIFX03



5/8" x 18NF External Thread

THREAD	SEAT	MOUNT	HEX	OAL	FITS
3/8"BSF	Inverted	Bulkhead	19mm	45mm	V

HFIFX04



5/8" x 18NF External Thread

THREAD	SEAT	MOUNT	HEX	OAL	FITS
7/16" x 20NF	Inverted	Bulkhead	19mm	45mm	V

HFIFX05



5/8" x 18NF External Thread

THREAD	SEAT	MOUNT	HEX	OAL	FITS
3/8" x 24NF	DPS	Bulkhead	19mm	45mm	V

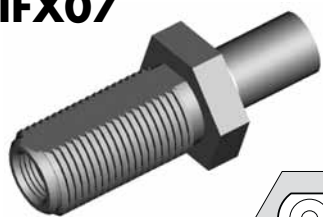
HFIFX06



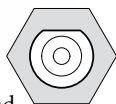
5/8" x 18NF External Thread

THREAD	SEAT	MOUNT	HEX	OAL	FITS
7/16" x 24NS	Inverted	Bulkhead	16mm	46mm	US

HFIFX07

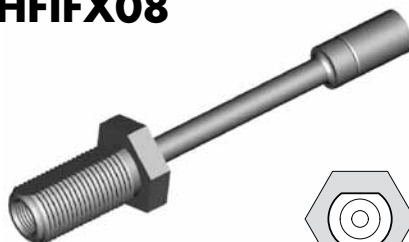


3/4" x 16NF External Thread

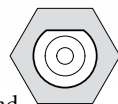


THREAD	SEAT	MOUNT	HEX	OAL	FITS
7/16" x 24NS	Inverted	Bulkhead	25mm	65mm	US

HFIFX08

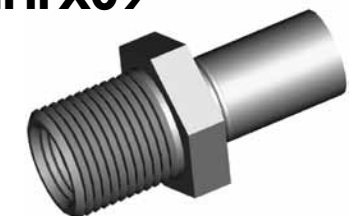


3/4" x 16NF External Thread



THREAD	SEAT	MOUNT	HEX	OAL	FITS
7/16" x 24NS	Inverted	Bulkhead	25mm	135mm	US

HFIFX09



11/16 x 18NS External Thread

THREAD	SEAT	MOUNT	HEX	OAL	FITS
1/2" x 20NF	Inverted	Bulkhead	22mm	46mm	US

HFIFX10



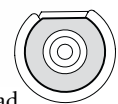
5/8" x 18NF External Thread

THREAD	SEAT	MOUNT	HEX	OAL	FITS
3/8" x 24NF	Inverted	Bulkhead	22mm	117mm	US

HFIFX11



5/8" x 18NF External Thread



THREAD	SEAT	MOUNT	HEX	OAL	FITS
3/8" x 24NF	Inverted	Bulkhead	19mm	48mm	US

HFIFX12



5/8" x 18NF External Thread



THREAD	SEAT	MOUNT	HEX	OAL	FITS
7/16" x 24NS	Inverted	Bulkhead	22mm	54mm	US

No Mount

Bulkhead Mount

A = Asian

EU = European

US = United States

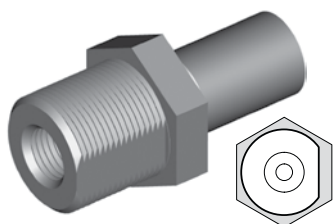
UNI = Universal

V = Various

IMPERIAL FEMALE FITTINGS

Bulkhead Mount

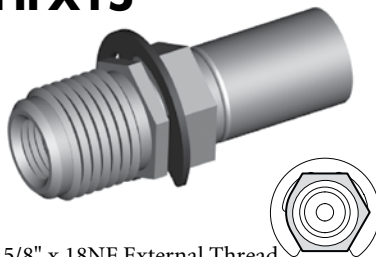
HFIFX14



3/4" x 16NF External Thread

THREAD	SEAT	MOUNT	HEX	OAL	FITS
3/8" x 24NF	Inverted	Bulkhead	22mm	45mm	US

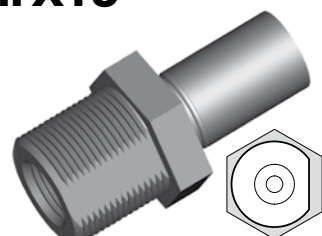
HFIFX15



5/8" x 18NF External Thread

THREAD	SEAT	MOUNT	HEX	OAL	FITS
3/8" x 24NF	Inverted	Bulkhead	16mm	47mm	US

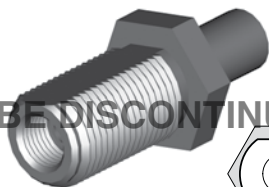
HFIFX16



3/4" x 16NF External Thread

THREAD	SEAT	MOUNT	HEX	OAL	FITS
7/16" x 24NS	Inverted	Bulkhead	22mm	45mm	US

HFIFX17

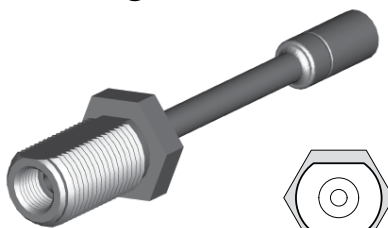


TO BE DISCONTINUED

7/8" x 14NF External Thread

THREAD	SEAT	MOUNT	HEX	OAL	FITS
1/2" x 20NF	Inverted	Bulkhead	27mm	65mm	US

HFIFX18

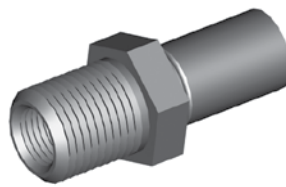


7/8" x 14NF External Thread

THREAD	SEAT	MOUNT	HEX	OAL	FITS
1/2" x 20NF	Inverted	Bulkhead	27mm	135mm	US

HFIFX19

NEW

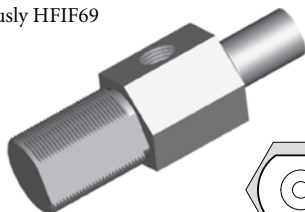


7/8" x 14NF External Thread

THREAD	SEAT	MOUNT	HEX	OAL	FITS
7/16" x 24NS	Inverted	Bulkhead	25.4mm	61mm	US

HFIFX21

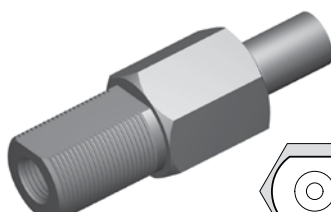
Previously HFIF69



7/8" x 18NS External Thread

THREAD	SEAT	MOUNT	HEX	OAL	FITS
7/16" x 24NS x 2	Inverted	Bulkhead	25mm	80mm	US

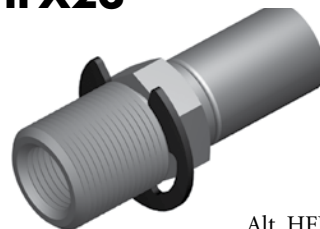
HFIFX22



7/8" x 14NF External Thread

THREAD	SEAT	MOUNT	HEX	OAL	FITS
7/16" x 24NS	Inverted	Bulkhead	1"	80mm	US

HFIFX23

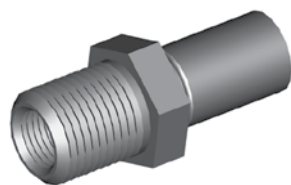


Alt. HFIFX01

5/8" x 18NF External Thread

THREAD	SEAT	MOUNT	HEX	OAL	FITS
7/16" x 24NS	Inverted	Bulkhead	5/8"	46mm	V

HFIFX20



5/8" x 18NF External Thread

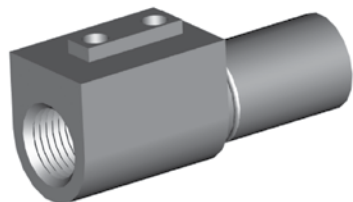
THREAD	SEAT	MOUNT	HEX	OAL	FITS
1/8"NPT	-	Bulkhead	19mm	45mm	US

DID YOU KNOW?

Most female fittings with a bulkhead mount use a 5/8" x 18NF thread, and this is the only thread that BQ supplies. However some of these fittings come with a M16 x 1.5 or a fine brass thread. If in doubt, supply a BQ13 nut with the fitting.

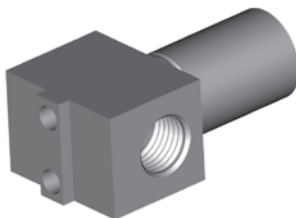
Bracket Mount

HFIF15



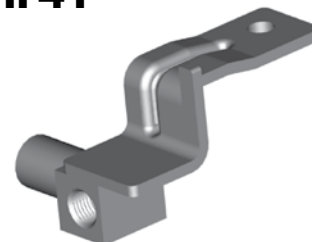
THREAD	SEAT	MOUNT	HEX	OAL	FITS
3/8" x 24NF	Inverted	Bracket	-	46mm	US

HFIF22



THREAD	SEAT	MOUNT	HEX	OAL	FITS
3/8" x 24NF x 2	Inverted	Bracket	-	41mm	US

HFIF41



Right

THREAD	SEAT	MOUNT	HEX	OAL	FITS
3/8" x 24NF	Inverted	Bracket	-	50mm	US

A = Asian

EU = European

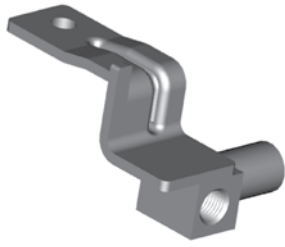
US = United States

UNI = Universal

V = Various

IMPERIAL FEMALE FITTINGS

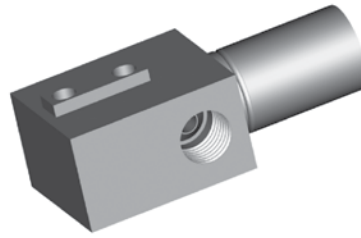
HFIF42



Left

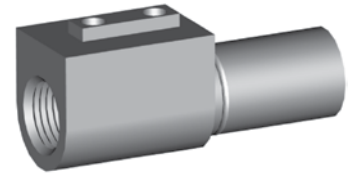
THREAD	SEAT	MOUNT	HEX	OAL	FITS
3/8" x 24NF	Inverted	Bracket	-	50mm	US

HFIF44



THREAD	SEAT	MOUNT	HEX	OAL	FITS
3/8" x 24NF x 2	Inverted	Bracket	-	50mm	US

HFIF52



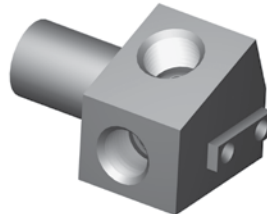
THREAD	SEAT	MOUNT	HEX	OAL	FITS
7/16" x 24NS	Inverted	Bracket	-	46mm	US

HFIF60



THREAD	SEAT	MOUNT	HEX	OAL	FITS
3/8" x 24NF x 2	Inverted	Bracket	-	102mm	US

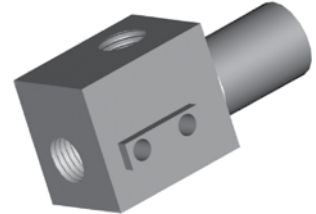
HFIF60A



Use BQB07 Bracket

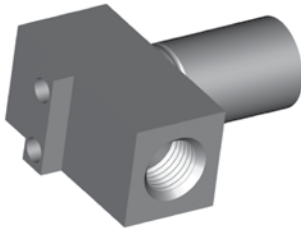
THREAD	SEAT	MOUNT	HEX	OAL	FITS
3/8" x 24NF - 2	Inverted	Bracket	-	42mm	US

HFIF70



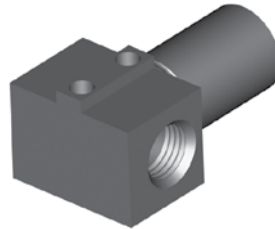
THREAD	SEAT	MOUNT	HEX	OAL	FITS
3/8" x 24NF x 2	Inverted	Bracket	-	48mm	US

HFIF81



THREAD	SEAT	MOUNT	HEX	OAL	FITS
3/8" x 24NF	Inverted	Bracket	-	38mm	US

HFIF90



THREAD	SEAT	MOUNT	HEX	OAL	FITS
3/8" x 24NF x 2	Inverted	Bracket	-	37mm	US

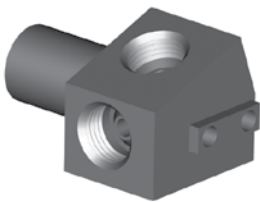
HFIF99



THREAD	SEAT	MOUNT	HEX	OAL	FITS
3/8"NF x 2	Inverted	Bracket	-	56mm	US

Bracket Mount

HFIF109



THREAD	SEAT	MOUNT	HEX	OAL	FITS
7/16" x 24NS x 2	Inverted	Bracket	-	46mm	US

HFIF120

NEW



Use with wire bracket.

THREAD	SEAT	MOUNT	HEX	OAL	FITS
3/8" x 24NF	Inverted	Clip	15.88mm	42mm	US

HFIF127



Left

THREAD	SEAT	MOUNT	HEX	OAL	FITS
3/8" x 24NF	Inverted	Bracket	-	-	US

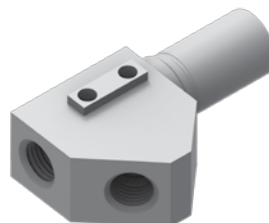
HFIF128



Right

THREAD	SEAT	MOUNT	HEX	OAL	FITS
3/8" x 24NF	Inverted	Bracket	-	-	US

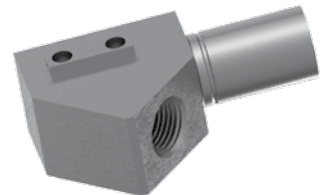
HFIF138



THREAD	SEAT	MOUNT	HEX	OAL	FITS
7/16" x 24NS x 2	Inverted	Bracket	-	53mm	US

HFIF148

NEW



THREAD	SEAT	MOUNT	HEX	OAL	FITS
3/8" x 24NF	Inverted	Bracket	-	52.5mm	US

A = Asian

EU = European

US = United States

UNI = Universal

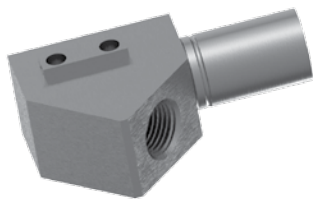
V = Various

IMPERIAL FEMALE FITTINGS

Bracket Mount

HFIF149

NEW



THREAD	SEAT	MOUNT	HEX	OAL	FITS
3/8" x 24NF	Inverted	Bracket	-	52.5mm	US

HFIF152



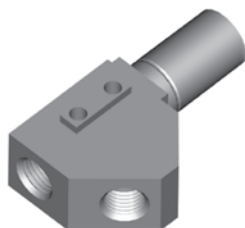
THREAD	SEAT	MOUNT	HEX	OAL	FITS
3/8" x 24NF x 2	Inverted	Bracket	-	47mm	US

HFIF153



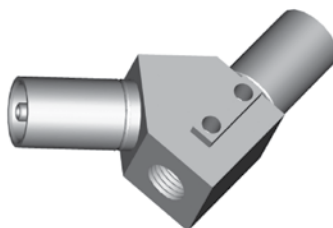
THREAD	SEAT	MOUNT	HEX	OAL	FITS
3/8" x 24NF x 2	Inverted	Bracket	-	57mm	US

HFIF304



THREAD	SEAT	MOUNT	HEX	OAL	FITS
3/8" x 24NF x 2	Inverted	Bracket	-	51mm	US

HFIF306



THREAD	SEAT	MOUNT	HEX	OAL	FITS
3/8" x 24NF	Inverted	Bracket	-	58mm	US

BQ71



Bracket Retaining Screws (PKT 50)

This thread forming screw is required to secure bracket to bracket mount fittings.